

LPESA Spring Conference


Roadside Maintenance Experiences from LADOTD District 07



Presented by:

Michael Stevens
District 07 Roadside Development
Coordinator
Lake Charles, Louisiana





What are the responsibilities
and duties of a DOTD District
Roadside Development
Coordinator?

Roadside Development

➤ Vegetation Management

- Manage the Herbicide Application Program for the District.
 - Maintain the District's herbicide inventory
 - Issue herbicide to applicators
 - Consult applicators on which herbicides to use and at what rates or concentrations
 - Calibration of spray equipment

Roadside Development

- Vegetation Management (cont.)
 - Consult with mowing operations
 - Approve trimming and removal of significant trees
 - Manage the wildflower program

Roadside Development

➤ Litter Removal

- Removal of hazards and debris from Interstate and US Highways (Road Runners)
- LADOC Project Clean-up (inmate litter removal)
- Adopt-a-Road

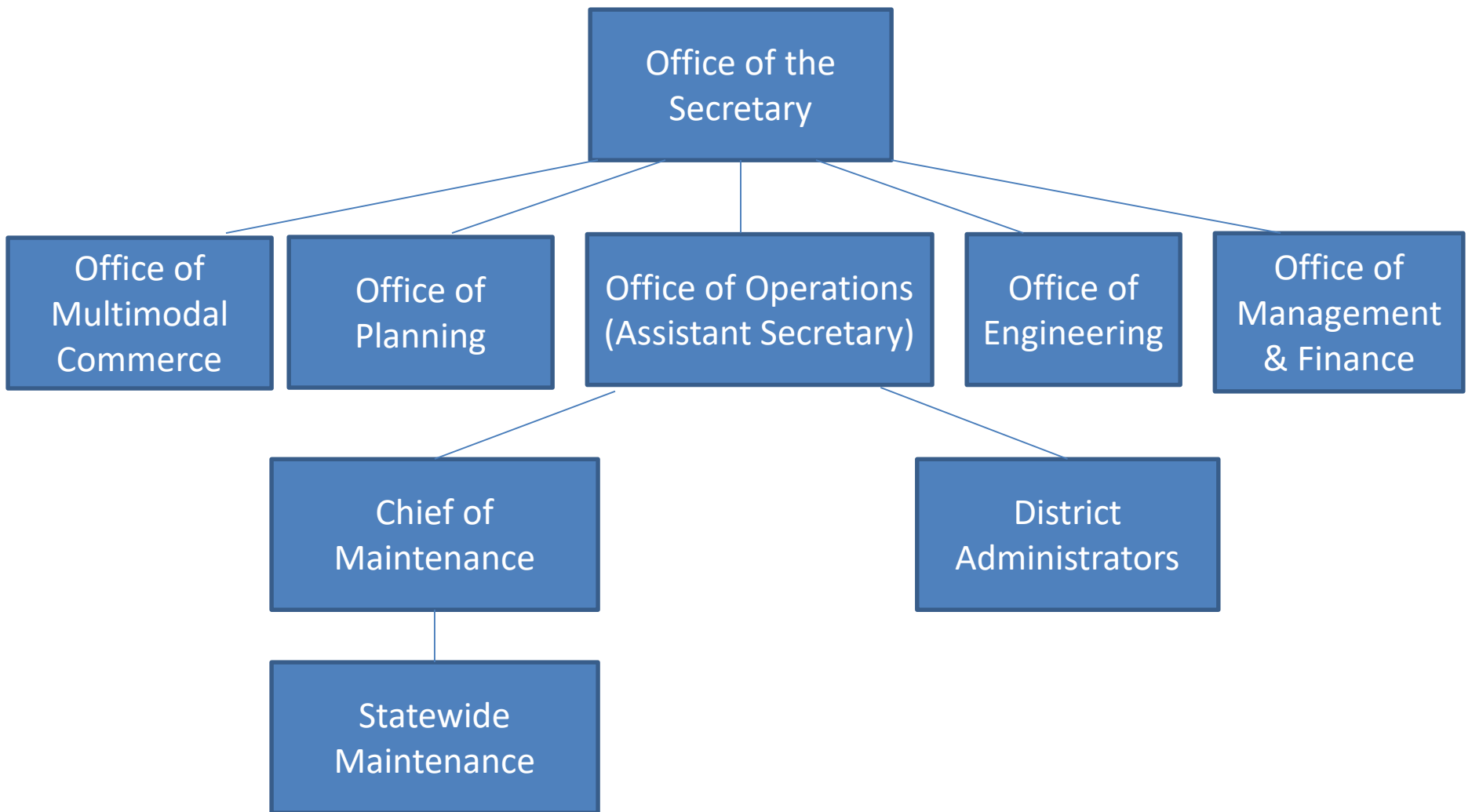
➤ Rest Area Operations

➤ Environmental

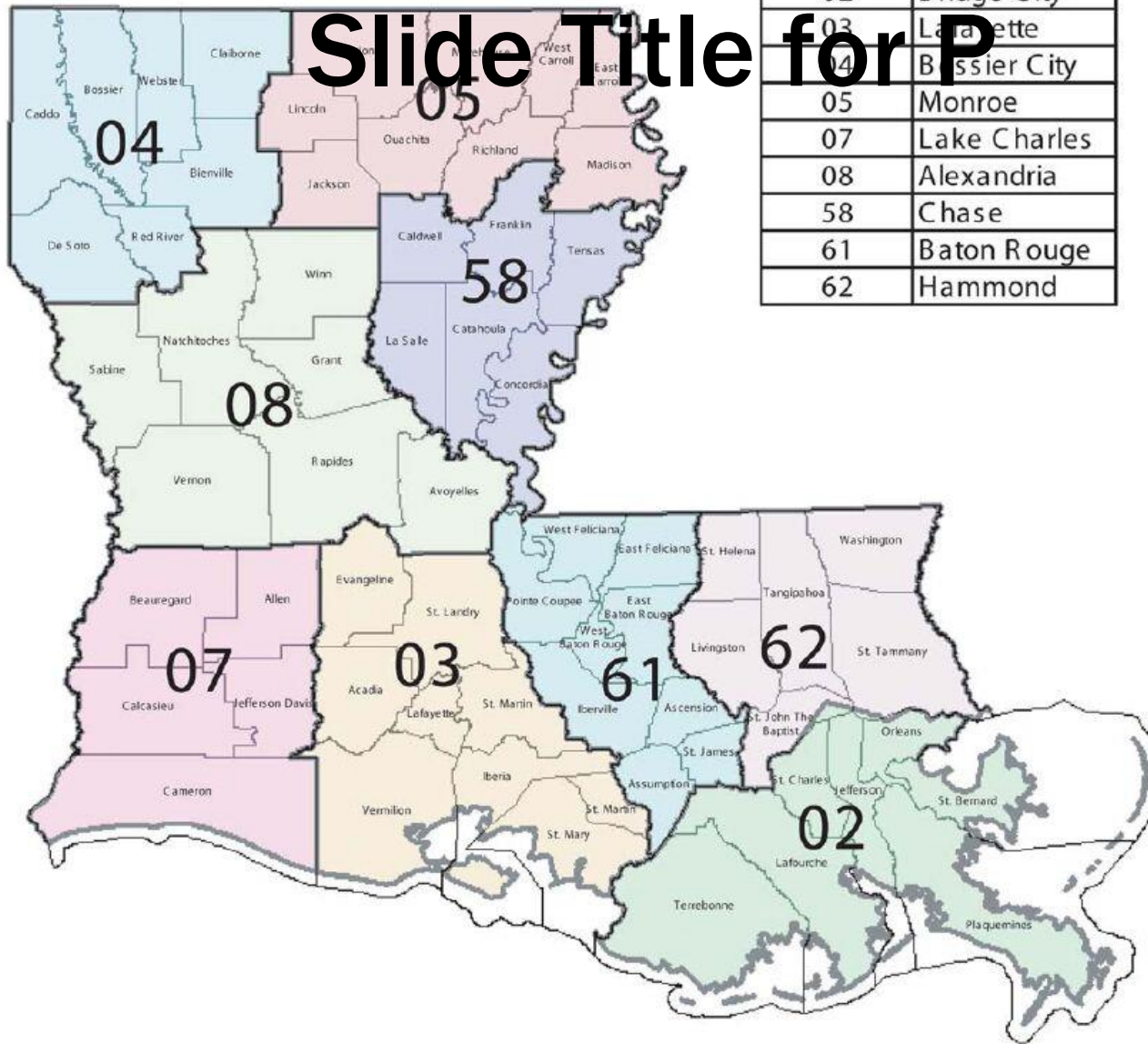


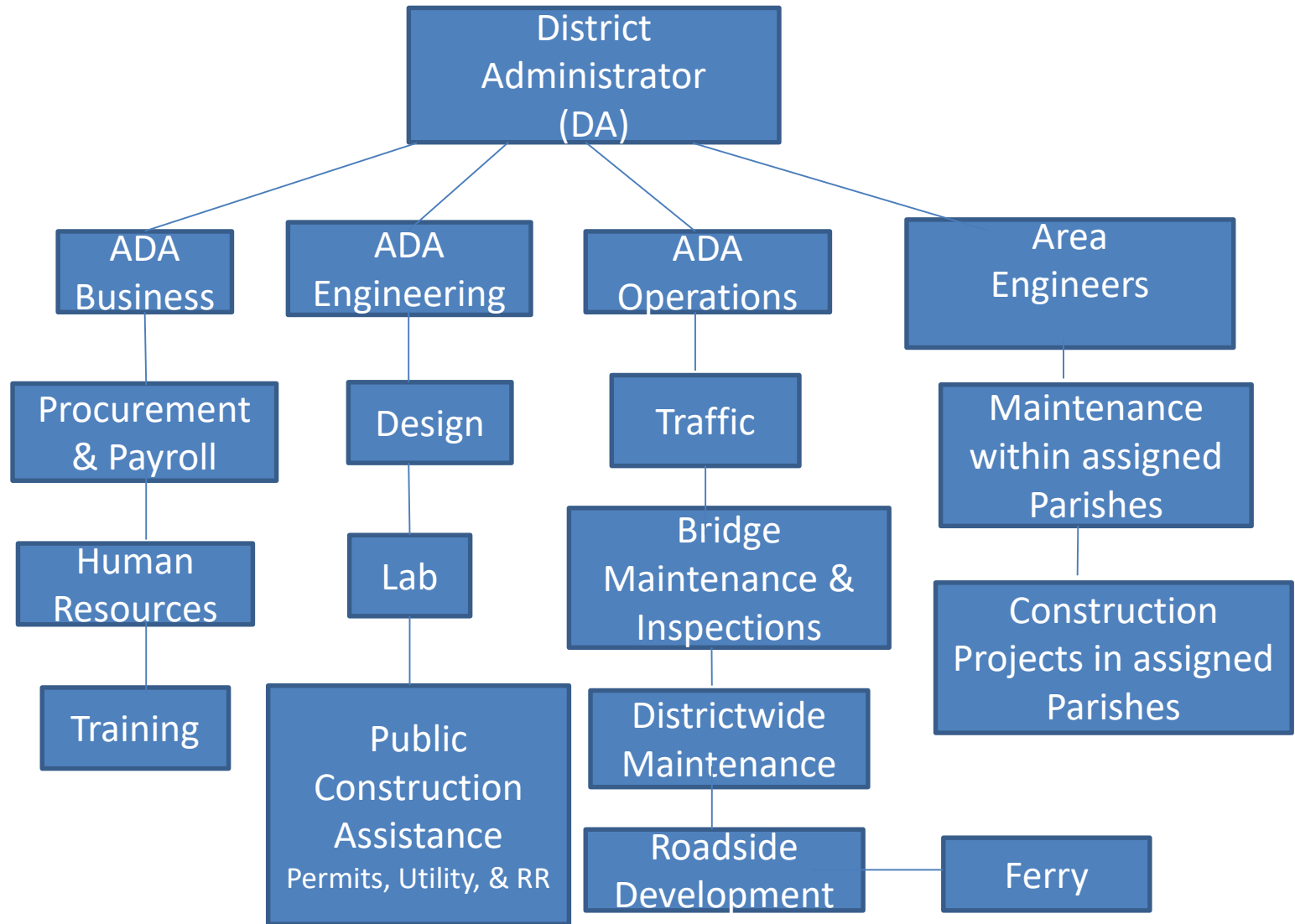
DOTD Organizational Chart

(Simplified to illustrate Maintenance Units)



Slide Title for P





Roadway & Roadside Maintenance

- DOTD District 07 maintains:
 - 1,256.73 miles (Sectional Length)
 - 3,026.681 miles (Lane Miles)
 - Approximately 2,500 miles (Roadside)

Roadway & Roadside Maintenance

➤ DOTD Personnel

- Statewide Maintenance Sections
 - Specialty equipment & skills not feasible for each District
- Districtwide Maintenance Units
 - Specialty equipment & skills not feasible for each Parish Maintenance Unit
- Parish Maintenance Units
 - Located in each parish of the state
 - Perform most of the day to day maintenance

Roadway & Roadside Maintenance

➤ Non-DOTD Personnel

- Private Contractors (7 Maintenance Contracts)
 - Mowing & Litter (4)
 - Sweeping (1)
 - Rest Area (1)
 - Guardrail (1)
- Maintenance Agreements with Parish Governments & Municipalities (2 Parish & 16 Municipal)



Roadside Maintenance

DOTD



Roadside Maintenance

Statewide (Section 42)

- Ditch Cleaning (Long-Stick Excavator)
- Culvert & Subsurface Drainage Cleaning (Sewer Vac Truck)
- Vegetation Management
 - Brachiosaurus
 - Stump Grinders (Skid Steer Attachment)
 - Energreen

Statewide Long Reach Excavator

- Reach Capabilities 49.5ft



Statewide Brontosaurus

- Spot specific
- Reach – 30ft
- Can grind trees up to 8 inches in diameter
- Not a real pretty cut



Statewide Energreen

- Used to cut limbs over roadway & limb trees
- Reach Capabilities 54ft



Statewide Stump Grinders

Statewide has both walk-behind and
skid steer mounted grinders





Districtwide

Roadside Development (Unit 765)

- Vegetation Management
 - Herbicide Application
 - Tree and Brush Removal
 - Wildflower Program
- Litter Removal

Roadside Herbicide Application

Goals & Objectives

- Reduce the frequency of mowing
- Control vegetation which cause sight obstructions
 - Invasive Species (Johnson & Itch Grasses, Giant Rag Weed, Chinese Tallow, Morning Glory, Kudzu)
 - Native Species (mainly trees and brush)
- Promote Bermuda Grass release

Bare Ground (not our objective)



Invasive Species

Johnson Grass



Invasive Grasses

Itch Grass



Johnson Grass



Roadside Herbicide Application

Roadway



Roadside Herbicide Application

Off of Roadway



Roadside Herbicide Application

Strategies to Control Invasive Grasses & Promote Bermuda Grass Release

- Treat roadside approximately 14 days after mowing
 - **May – June (or after first mowing):** no more than 10oz of Glyphosate/acre (Roundup Pro Concentrate)
 - **Mid June – September:** 2qts/acre MSMA 6 Plus
 - 1oz/acre Escort or 1qt/acre Garlon 3A can be added to control broad leafs, if needed

Bermuda Grass Release



Application of MSMA

US 165 Jeff Davis Parish



MSMA Application

US 165 Jeff Davis Parish



MSMA Application

I-10 Jeff Davis Parish Median & CB



MSMA Application

I-10 Jeff Davis Parish Median



MSMA Application

I-10 Jeff Davis Parish Outside Shoulder



Tree removal

District 07

January 2021 - present

Parish	Below 18" Diameter	Above 18" Diameter	Total Trees Removed
Allen	47	125	172
Beauregard	130	51	181
Calcasieu	137	68	205
Cameron	37	0	37
Jefferson Davis	239	3	242

Wildflower Program



Wildflowers

LA 82 Cameron Parish



Wildflowers

Allen Parish



Parish Maintenance Units

- DOTD Maintenance Unit located in each Parish
- Perform most of the Roadway and Roadside Maintenance within the Parish
- Roadside Maintenance
 - Mowing
 - Small Tree and Brush Removal
 - Herbicide Application
 - Ditch Cleaning
 - Removal of Large Debris



Roadside Maintenance Non-DOTD

Contract Litter & Debris Removal and Mowing Acres District 07

Parish	Interstate Hwy Acres	Backroads Acres	Contracted Total Acres
Allen		156	156
Beauregard		1,095	
			1,814
Cameron		34	34

Contract Litter & Debris Removal and Mowing Cycles

District 07

Litter Removal

Mowing Contractors

- Litter removed prior to each mowing cycle
- Only remove debris and litter from mowable surface



Litter Removal

LADOC Project Cleanup

- Contract between LADOC & LADOTD
 - Allen Correctional Center
 - Dixon Correctional Institute
- Only State Inmates
- Only when enough trustees are available

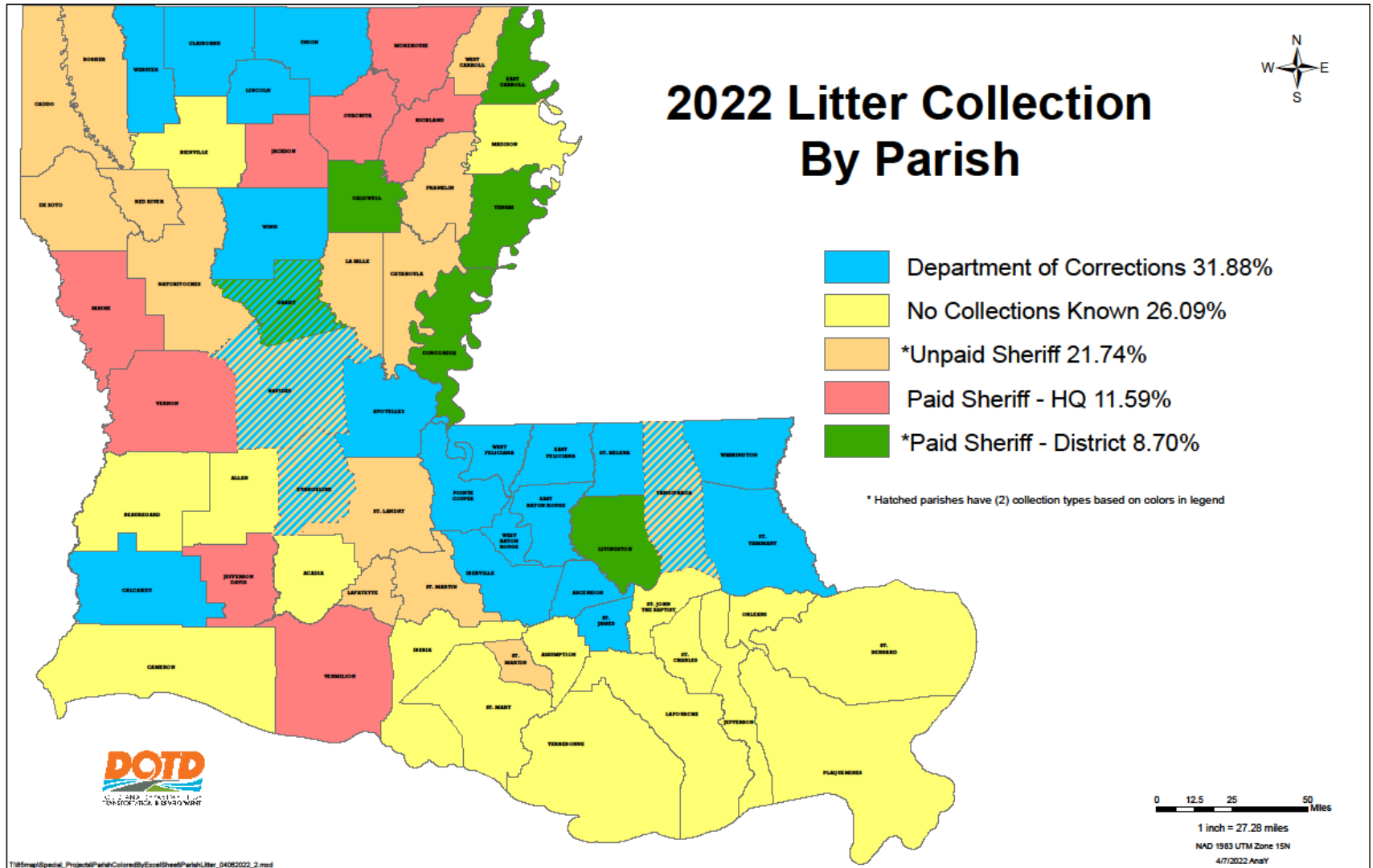


Litter Removal

Sheriff's Litter Agreement

- 8 Litter Agreements
Statewide
 - District 07 has one:
Jefferson Davis Sheriff
- 6 Maintenance
Agreements Statewide
(Litter & Mowing)
- At least 15 Unpaid
Sheriff's Agreements





Toomey Rest Area



Adopt-A-Road

- Voluntary
- Business & Civic Groups
- Commit to a 2 yr. contract
- Asked to collect litter 4 times per year
- Must adopt ½ mile (4 lane) or 1 mile (2 lane)





Thank you